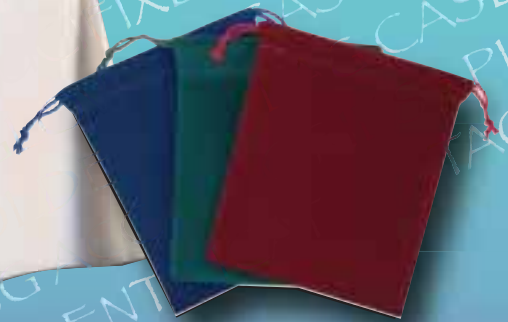


Church & Chapel Metal Arts, Inc.

Volume #2

Funeral Home Sundries & Solutions



CHURCH & CHAPEL METAL ARTS
**ANGELUS
EQUIPMENT**
METAL CRAFTSMEN

Traditional **CRUCIFIXES** Interior & Exterior

CRUCIFIXES



10" INTERIOR CRUCIFIX

Brass Cross

- CE LO 510** Bronze Corpus
- CE LC 510** Copper Corpus
- CE LS 510** Silver Corpus



10" INTERIOR CRUCIFIX

Brass Cross

- CE 2968-6** Flesh-Colored Plastic Corpus



10" INTERIOR CRUCIFIX

Walnut Wood Cross

- CE WO 510** Bronze Corpus
- CE WC 510** Copper Corpus
- CE WS 510** Silver Corpus



10" INTERIOR CRUCIFIX

14kt Gold Cross

- CE 2102-1** Bronze Corpus
- CE 2102-2** Copper Corpus
- CE 2102-3** Silver Cross/Corpus



10" INTERIOR CRUCIFIX

Walnut Cross

- CE JC 9593-L** Antique Gold Corpus



10" INTERIOR CRUCIFIX

Walnut Cross with 24KT Gold-plated Brass Inlay.

- CE JC 3001-L** Antique Gold Corpus



12" CAST EXTERIOR CRUCIFIX

Cross and Corpus both in Matching Finishes.

- CE LO 612** Bronze Finish
- CE LC 612** Copper Finish
- CE LS 612** Silver Finish
- CE LBG 612** Bright Gold Finish
- CE LBC 612** Bright Copper Finish
- CE LBS 612** Bright Silver Finish



12" EXTERIOR CRUCIFIX

Walnut Cross

- CE WO 612** Bronze Corpus
- CE WC 612** Copper Corpus
- CE WS 612** Silver Corpus



14" CAST EXTERIOR CRUCIFIX

- CE LO 714** Bronze Cross/Corpus
- CE LC 714** Copper Cross/Corpus
- CE LS 714** Silver Cross/Corpus
- CE LBG 714** Bright Gold Cross/Corpus



14" CAST EXTERIOR CRUCIFIX

- CC 814-1** Antique Gold Cross/Corpus
- CC 814-2** Copper Cross/Corpus
- CC 814-3** Silver Cross/Corpus
- CC 814-4** Statuary Bronze Cross/Corpus



16" CAST EXTERIOR CRUCIFIX

- CE 169G** Antique Brass Cross/Corpus
- CE 169C** Copper Cross/Corpus
- CE 169S** Antique Silver Cross/Corpus
- CE 169B** Scotia Bronze Cross/Corpus

Risen Corpus **CRUCIFIXES** Interior & Exterior

CRUCIFIXES



10" INTERIOR CRUCIFIX
 Mod. Risen Corpus- 14kt Gold Plated Cross
RCE 2382-1 Bronze Corpus
RCE 2382-2 Copper Corpus
RCE 2382-3 Silver Cross/Corpus



10" INTERIOR CRUCIFIX
 Trad. Risen Corpus - Brass Cross
CE LRO 510 Bronze Corpus
CE LRC 510 Copper Corpus
CE LRS 510 Antique Silver Corpus
CE LRG 510 Bright Gold Corpus



10" INTERIOR CRUCIFIX
 Mod. Risen Corpus - Walnut Cross
CE WRO 510 Bronze Corpus
CE WRC 510 Copper Corpus
CE WRS 510 Silver Corpus
CE WRG 510 Bright Gold Corpus



10" INTERIOR CRUCIFIX
 Modern Risen Corpus - Walnut Cross
CE JC 9530-L Antique Gold Corpus



10" INTERIOR CRUCIFIX
 Trad. Risen Corpus - Walnut Cross with
 24KT Gold-Plated Narrow Brass Inlay
CE JC 3002-L Antique Gold Corpus



10" INTERIOR CRUCIFIX
 Trad. Risen Corpus-Walnut Cross
CE WLRO 510 Bronze Corpus
CE WLRC 510 Copper Corpus
CE WLRS 510 Silver Corpus
CE WLRG 510 Bright Gold Corpus



12" CAST EXTERIOR CRUCIFIX
 Modern Risen Corpus
CE RO 612 Bronze Cross/Corpus
CE RC 612 Copper Cross/Corpus
CE RS 612 Silver Cross/Corpus



12" EXTERIOR CRUCIFIX
 Modern Risen Corpus - Walnut Cross
CE WRO 612 Bronze Corpus
CE WRC 612 Copper Corpus
CE WRS 612 Silver Corpus



14" CAST EXTERIOR CRUCIFIX
 Modern Risen Corpus
RC 814-1 Antique Gold Cross/Corpus
RC 814-2 Copper Cross/Corpus
RC 814-3 Silver Cross/Corpus
RC 814-4 Statuary Bronze Cross/Corpus



10" INTERIOR CROSS
CE 2100-1 14kt Gold Plated Cross
CE 2100-3 Nickel Plated Cross



10" INTERIOR CROSS
CE WP 510 Plain Walnut Wood Cross
Walnut Cross



10" INTERIOR CROSS
CE JC 3000 Walnut Wood Cross with 24kt Gold-Plated Narrow Brass Inlay
Walnut Cross



10" INTERIOR CROSS
CE 2107-1 Praying Hands Cross
CE 2107-3 14kt Plated Cross/Brz Hands
Nickel Plated Cross/Hands



10" INTERIOR CROSS
Walnut Cross with Praying Hands
CE WPHO 510 Bronze Hands
CE WPHS 510 Silver Hands
CE WPHG 510 Bright Gold Hands



14" CAST EXTERIOR CROSS
CCP 814-1 Antique Gold Cross
CCP 814-2 Copper Cross
CCP 814-3 Silver Cross
CCP 814-4 Statuary Bronze Cross



10" INTERIOR CRUCIFIX
Eastern Rite - Flat Metal Stock
CE 2109-1 Gold Finish
CE 2109-2 Copper Finish
CE 2109-3 Silver Finish



9.5" CAST INTERIOR CRUCIFIX
Eastern Rite
CE 2604-1 Bronze
CE 2604-2 Copper Finish
CE 2604-3 Silver Finish



10" INTERIOR CRUCIFIX
Orthodox
CE 2600-1 14kt Gold Plated Cross/Brz Corpus
CE 2600-3 Nickel Plated Cross/Corpus



10" INTERIOR CRUCIFIX
Orthodox - Walnut Cross
CE WGO 510 Bronze Corpus
CE WGC 510 Copper Corpus
CE WGS 510 Silver Corpus
CE WGG 510 Bright Gold Corpus



12" CAST EXTERIOR CRUCIFIX
Orthodox
CE LGO 612 Bronze Finish
CE LGC 612 Copper Finish
CE LGS 612 Silver Finish



12" EXTERIOR CRUCIFIX
Orthodox - Walnut Cross
CE WGO 612 Bronze Corpus
CE WGC 612 Copper Corpus
CE WGS 612 Silver Corpus

Specialty **CROSSES**

CRUCIFIXES



4.25" BOY'S CROSS
14kt Gold Plated Brass Cross
CE JC 555E Pewter Figure



4.25" GIRL'S CROSS
14kt Gold Plated Brass Cross
CE JC 557E Pewter Figure



8" CAST KNOTTED CELTIC CROSS
CE JC 9022-K Antique Bronze Finish
CE JC 9021-E Fine Pewter



CELTIC CROSS
Solid Brass Cross
CE CC 4300 11" Height
CE CC 4302 7" Height
CE CC 4301 5" Height



5" POLICE CROSS
Fine Pewter Cross
CE JC 9495-K Antique Bronze Finish
CE JC 9493-E Antique Silver Finish



5" FIRE FIGHTER'S CROSS
Fine Pewter Cross
CE JC 9496-K Antique Bronze Finish
CE JC 9494-E Antique Silver Finish



9" FINE PEWTER CROSS
With The "23rd Psalm"
CE JC 745-K Antique Bronze Finish
CE JC 746-E Pewter Finish



9" FINE PEWTER CROSS
With The "Our Father Prayer"
CE JC 740-K Antique Bronze Finish
CE JC 741-E Pewter Finish



12.75" SICK CALL CRUCIFIX
Contains the Following:
• 2 Candles
• 51% Beeswax
• 2 Candle Holders
• Cotton
• Instruction Sheet
• Holy Water container



12.75" SICK CALL CRUCIFIX
Walnut Cross
CE JC 9153-K Antique Bronze Corpus
CE JC 9153-E Antique Silver Corpus
Oak Cross
CE JC 9152-K Antique Gold Corpus
CE JC 9152-E Antique Silver Corpus



SLIMLINE CRUCIFIX HOLDER
Walnut Stained Wood with Magnetic Mount
CE 3100 Walnut Finish

EMBLEMS & PLAQUES

EMBLEMS ONLY

The emblems shown below are also available on plaques. Plaques available include: Square Walnut; Square Lucite Plastic & Round Lucite Plastic.



Order of Eastern Star
CECC-303-E0



Fraternal Order of Eagles
CECC-304-E0



Masonic 3rd
CECC-305-E0



Knights of Columbus 3rd
CECC-308-E0



Odd Fellows
CECC-317-E0



Shriners
CECC-318-E0



Rotary international
CECC-319-E0



Elks
CECC-324-E0



Loyal Order of Moose
CECC-327-E0



Kiwanis International
CECC-328-E0



Star of David
CECC-0349-E0



Lions International
CECC-0366-E0

PLAQUES FOR MOUNTED EMBLEMS



SQUARE WALNUT
4.5" x 4.5"

CECC-305-W
Shown with
Masonic Emblem



ROUND LUCITE
4" diameter

CECC-308-PR
Shown with Knights of
Columbus Emblem



SQUARE LUCITE
4" x 4"

CECC-318-PS
Shown with Shriners
Emblem

EMBLEMS ALSO AVAILABLE (Not shown)

CECC-302-E0	U.S. Mail	CECC-344-E0	U.S. Army
CECC-312-E0	Fire Department	CECC-345-E0	U.S. Air Force
CECC-320-E0	National Exchange Club	CECC-346-E0	U.S. Marine Corps
CECC-323-E0	NWSE	CECC-347-E0	U.S. Coast Guard
CECC-325-E0	St. Christopher	CECC-350-E0	Funeral Director
CECC-330-E0	Methodist	CECC-353-E0	Episcopalian
CECC-331-E0	Lutheran	CECC-356-E0	American Red Cross
CECC-334-E0	Royal Arch Mason	CECC-359-E0	United Way
CECC-335-E0	20-30 International	CECC-361-E0	Volunteer
CECC-336-E0	32nd Degree Mason	CECC-362-E0	Air National Guard
CECC-337-E0	Knights of Pythias	CECC-363-E0	Air force Reserve
CECC-340-E0	U.S. Navy	CECC-364-E0	Army Reserve
CECC-343-E0	Knights of Columbus	CECC-365-E0	Army National Guard

ROSARIES

- A. CB 503 18" Aurora Borealis Rosary**
5mm beads with soldered link chain. Colors: Crystal, Solid Black, Blue or Pink.
- B. CB 150 20" Plastic Oval Bead Rosary**
Silver plated quadruple interlocked chain with hammered crucifix. Colors: Black, Crystal, White, Pink or Blue
- C. CE HI 70A-912 24" Celtic Cross Rosary**
Green beads with Celtic Cross



ICON PLAQUES - CASKET PALLS



CRUCIFIXION

Gold Frame Laminated Plaque

CEB 18-107 8" x 10"
CEB 14-107 11" x 14"



OUR LADY OF PASSION

Gold Frame Laminated Plaque

CEB 18-111 8" x 10"
CEB 14-111 11" x 14"
CEB 32-111 19" x 27"



CHRIST THE TEACHER

Gold Frame Laminated Plaque

CEB 18-120 8" x 10"
CEB 14-120 11" x 14"
CEB 32-120 19" x 27"



THE HOLY SUPPER

Gold Frame Laminated Plaque

CEB 18-121 8" x 10"
CEB 14-121 11" x 14"
CEB 32-121 19" x 27"



HOLY TRINITY

Gold Frame Laminated Plaque

CEB 18-123 8" x 10"
CEB 14-123 11" x 14"
CEB 32-123 19" x 27"

CASKET PALLS

Measures 5'10" x 11'. Made of Washable, Off-White Polyester Fabric



CEHA-FP 57

Casket Pall with CHI RHO and Cross



CEHA-FP 65
CEHA-967U

Casket Pall with Coronation Tapestry
 Urn Pall with Coronation Tapestry



AMERICAN FLAG

Best U.S. Flag made
 to put over casket

CEVF 59111000 5' X 9.5'



CEHA-905F

Casket Pall with 7-Color Swiss Embroidery



CEHA-912W

Casket Pall with Celtic Cross

ICON PLAQUES

CASKET PALLS

GLOVES & CASKET ACCESSORIES



CASKET NAME PLAQUES

Made from Antimonial Lead to easily form fit to any casket. Available in 2 sizes, 3 mounting styles & 7 popular finishes. Please specify size, mounting choice and finish.

Sizes:

CE ECH 855 8" x 4"
CE ECH 853 8" x 2"

Available Mountings:

With holes & 5/8" brass brads
 With adhesive tape applied
 Plain without holes or tape

Available Finishes:

Pelini Brass
 Antique Copper
 Bronze Copper
 Blend Copper
 Brushed Nickel
 Antique Brass (not shown)
 Cedar Nickel (not shown)

ALL PALLBEARERS GLOVES ARE SOLD ONLY IN DOZENS



COTTON GLOVES Size Large

In Full Fashion Pattern, 3 Lines of Raised Stitching on Back, Gusset Fingers & Stitched Hem.

CE 1095 WM-1 White COTTON
CE 1096 GM-1 Grey COTTON



NYLON GLOVES One Size Fits All

In Full Fashion Pattern, 3 Lines of Raised Stitching on Back, Gusset Fingers & Stitched Hem.

CE 6400 WM-1 White NYLON
CE 6400 GM-1 Grey NYLON



COTTON GLOVES With Dotted Palms for Extra Grip Size Large

In Full Fashion Pattern, 3 Lines of Raised Stitching on Back, Gusset Fingers & Stitched Hem.

CE 1094 WM-1 White COTTON



COTTON GLOVES Economy Medium Weight - Size Large

Plain Back, No Gusset, Rolled Hem.
CE 1099 WM-1 White COTTON



COTTON GLOVES Economy Heavy Weight - Size Large

Plain Back, No Gusset, Rolled Hem.
CE 1059 WM-1 White COTTON



COTTON GLOVES With Snap Wrist - Size Large

In Full Fashion Pattern, 3 Lines of Raised Stitching on Back, Gusset Fingers & Stitched Hem.

CE 1051 WM-1 White COTTON

PALLBEARERS GLOVES

CASKET ACCESSORIES

CASKET ACCESSORIES

CASKET COVERS



CLOSED CASKET COVER

Light weight plastic cover protects casket from dust.
CEP 201010 Casket Cover



HEAVY WEIGHT CASKET COVER

Semi-clear, plastic casket cover. Ideal for protecting casket from weather.
CEP 252030 Heavy weight Casket Cover
CEP 251030 Medium weight Casket Cover



MULTI-COLOR QUILTED CASKET COVER

Ideal for storing caskets. 83.5" X 33" X 22.5"H
CE 1200 Quilted Casket Cover



CASKET CRANK

Used to close casket shut.
CE 10114 14" Crank
CE 10115 5" Crank



PRICE SET

15-unit casket/urn pricing set. 3/4" gold with black numbers.
CE HI 55-260 Numbers Price Set



"J" CASKET RACK

The popular "J" Casket Rack is constructed of lightweight aluminum with eight 1-inch prongs protruding from the topside to hold floral sprays securely. Sponge pads hold the saddle firmly in place at all times, and protects the casket finish from damage. Will fit any casket. Opens to 14.5" wide and 20" long. Folds down to 2" x 25" for storage.
CE XL-1125 Casket Rack



CASKET DUST CLOTH

Treated cloth used to wipe dust off caskets.
CD RK-1



MAGNETIC CASKET SPRAY MAT

Holds floral spray firmly and will not mar the casket finish.
CE RJ 1670 Magnetic Spray Mat



VETERANS FLAG HOLDER

Elastic rubber band holds flag securely around casket
CA 1910B Black
CA 1910C Clear



SHORT SAFETY CASKET SPRAY HOLDER

Fastens to casket with lip on lid.
CE #5 SHORT Black
CE #5 SHORT CLR Clear



LONG SAFETY CASKET SPRAY HOLDER

Fastens to handle lug on all other caskets
CE #6 LONG Black
CE #6 LONG CLR Clear



JAMES FLORAL HANGERS

CEJF NO. 4 Box of 48
CEJF NO. 10 Box of 100
CEJF NO. 50 Box of 500

PRESENTATION BAGS & PORTFOLIOS



ECONOMY PAPER BAG

Large size paper bag with sturdy handle. Available in Light Blue and Dark Green.

No imprint available. 16" x 6" x 12".
CB B 627 Light Blue
CB B 628 Dark Green



FLORAL BAG

An ideal way to distribute personal effects from the deceased or other items you may

want to give clients. Made of heavyweight 70# paper with a sturdy handle. Optional custom imprints available (extra cost).
CB B 626 16" x 6" x 12"



ECONOMY PLASTIC BAG

Large size plastic bag with sturdy rigid handle & chipboard bottom. Available in Dark green or White.

No imprint available. 16" x 6" x 12".
CB B 629 Dark Green
CB B 630 White



FOLDABAG

Vinyl collapsible bag with Black plastic handle. Folds down for convenient storage.

Available in Blue or Maroon Two sizes.
CE 1210P 12" x 10" (specify color)
CE 1412J 14" x 12" (specify color)

ALL-PURPOSE PORTFOLIO

The most versatile & desirable of all zipper top type bags. Available in supported expanded vinyl & laminated nylon. Silkscreen personalization available.

Supported Expanded Vinyl Colors Available:

Red, Dark Green, Royal Blue, Brown, White, Gray, Black, Mauve, Burgundy, Rajah Green, Emerald Green, Burgundy, Navy Blue, Orange, Dark Blue, Cream, Peanut Tan & Lake Blue.

Laminated Nylon: Outer layer of tough denier nylon bonded to a durable inner liner for strength, toughness & body. Bonding takes place under heat & extreme pressure to provide an exceptionally strong lamination. Smooth finish is resistant to wear.

Laminated Nylon Colors Available: Orange, Navy Blue, Black, Burgundy, Red, Dark Green, Kelly Green, Gray & Royal Blue.

CE 28 073 16" W x 12"H (Specify Size, Style & Color)
CE 28 3980 18" W x 14"H (Specify Size, Style & Color)
CE 28 1130 19" W x 15"H (Specify Size, Style & Color)



TOP-LOADING PORTFOLIO

Nylon zipper with cloth tape, heavy gauge vinyl. Imprint five lines of copy approximately 1.5" x 3.75" in lower right hand corner. Contact us for pricing on oversized copy in other locations.

Approximate tipping weight: 50 lbs. per 100 units.



Standard Vinyl Colors:

Red, Navy, Green, Black, Maroon, Gray, White & Royal Blue.

CE 28 990
 (Specify Portfolio Color & Imprint Color)

Standard Imprint Colors:
 White, Gold, Black, Red, Blue, & Green

11.5" x 18" Portfolio



9" x 12" TWO POCKET FOLDER

With gold foil imprint on the cover. Up to 20 sq. inches. With business card slits on right pocket side.

CE 28 IP 912
 *Please specify color



4" x 9" TWO POCKET FOLDER

With gold foil imprint on the cover. Up to 20 sq. inches.

CE 28 IP 49
 *Please specify color

JEWELRY POUCHES & FLAG CASES



VALUABLE POUCH

4" x 5" Velvet Valuables Pouch. **Available Colors:** Blue, Burgundy or Green. **Imprint includes:** 4 lines hot-stamped on one side in either Gold or Silver. Please specify Pouch Color & Imprint information and Color choice.

CE 8411

Valuable Pouch



JEWELRY POUCH

5" x 6" Flannel Jewelry Pouch. **Available Colors:** Blue or Burgundy. No imprint available.

CC B-10105

Specify Blue or Burgundy



JEWELRY POUCH WITH HANDY WRITE-ON CARD

5" x 6" Flannel Jewelry Pouch with card attached at the bottom. **Available Colors:** Blue or Burgundy. No imprint available.

CC B-10104

Specify Blue or Burgundy

FLAG CASES



LEFT OAK FLAG CASE

Solid Oak Flag Case with Glass front. 13"H x 25.5"W x 3.25"D

CE 2912

Oak Flag Case

CENTER ACRYLIC FLAG CASE

Clear Acrylic Case on Hardwood Oak base. 13"H x 24"W x 4"D

CE 1915

Acrylic Flag Case

RIGHT WALNUT FLAG CASE

Solid Walnut Flag Case with Glass front. 13"H x 25.5"W x 3.25"D

CE 1911

Walnut Flag Case



DELUXE FLAG MEMORIAL CASE

Made with one side clear and supported expanded vinyl on the opposite side. Black synthetic zipper is attached on long side for easy access. **Available Colors:** Black, White, Saddle Tan, Autumn Gold, Royal Blue, Turquoise, Forest Green, Brown, Teal, Red, Lake Blue, Emerald Green, Ghost, Dark Blue, Orange, Yellow, Purple, Maroon, Navy and Eggshell. Imprint included.

CE 2916

Please specify case color and imprint copy



CHERRY FLAG CASE

Solid Cherry Case with Glass front. 13"H x 25.5"W x 3.25"W.

CE 1917

Cherry Flag Case



ECONOMY VINYL FLAG CASE

Clear Vinyl front with blue back and red edging. 12.5"H x 23"W. Available with optional imprint. Please specify imprint information when ordering.

CE 2915

Economy Vinyl Flag Case

JEWELRY POUCHES

FLAG CASES

PROMOTIONAL PRODUCTS



CONTENDER

Retractable Black Ink Pen. Available with white barrel and your choice of trim. **Imprint location:** On the barrel under clip, measuring 2" wide x 7/8" high; Clip measuring 1-1/8"W x 5/32"H; or Backside of barrel measuring 2"W x 3/8"H. Price includes a 1-color imprint in 1 location. **Trim Colors:** Black, Blue, Burgundy, Green, Orange, Purple, Red or Yellow
CE 28 55155 Please specify Trim color, Imprint location and copy



CORPORATE PROMO STICK

Black Ink Pen with Removable Cap. **Imprint location:** On barrel measuring 1-3/4"W x 3/4"H. Price includes a 1-color imprint.
Available colors: Black, Red, Blue and Green.
CE 28 55124 Please specify pen color, Imprint location and copy



CLASSIC

Cap-Action Black Ink Pen. **Imprint location:** On barrel measuring 1-3/8"W x 1"H; or Cap measuring 1"W x 5/8"H. Price includes a 1-color imprint in one location. With Gold trim only. **Available Colors:** Burgundy, Black, White, Blue or Hunter Green.
CE 28 55036 Please specify pen color, Imprint location and copy



CAMBRIDGE

Twist-Action Black Ink Pen. **Imprint location:** Backside of barrel measuring 2"W x 1/2"H; Barrel measuring 2"W x 1/4"H; on Barrel under Clip measuring 1-1/8"W x 1/4"H. Includes 1 location imprint. With Gold trim only.
Available Colors: Black, Blue, Green or Burgundy.
CE 28 55052 Please specify pen color, Imprint location and copy

PROMOTIONAL PRODUCTS

PLASTIC GARMENTS



COVERALLS

SIZE	CLEAR	WHITE
SMALL	CEP 110011	CEP 110021
MEDIUM	CEP 110012	CEP 110022
LARGE	CEP 110013	CEP 110023
X-LARGE	CEP 110014	CEP 110024
XX-LARGE	CEP 110015	CEP 110025



STOCKINGS

SIZE	CLEAR	WHITE
SMALL	CEP 120011	CEP 120021
MEDIUM	CEP 120012	CEP 120022
LARGE	CEP 120013	CEP 120023
X-LARGE	CEP 120014	CEP 120024



PANTS

SIZE	CLEAR	WHITE
SMALL	CEP 101011	CEP 101021
MEDIUM	CEP 101012	CEP 101022
LARGE	CEP 101013	CEP 101023
X-LARGE	CEP 101014	CEP 101024



CAPRI PANTS

SIZE	CLEAR	WHITE
SMALL	CEP 160011	CEP 160021
MEDIUM	CEP 160012	CEP 160022
LARGE	CEP 160013	CEP 160023
X-LARGE	CEP 160014	CEP 160024



SLEEVES

SIZE	CLEAR	WHITE
ONE SIZE	CEP 130010	CEP 130020



INFANT UNIONALL

SIZE	CLEAR
ONE SIZE	CEP 140010

PLASTIC GARMENTS

- 4 mil. Vinyl Clear or White
- Heat Sealed Seams
- Strong Elastic Bands
- Individually Packed
- Flexible Will Not Crack
- Dispenser Box Available



DISPENSER BOX

Minimum Order of 12 pieces per size. Available for Coveralls, Stockings, Pants & Sleeves. Please Specify type of garment.



UNIONALLS

SIZE	CLEAR	WHITE
SMALL	CEP 140011	CEP 140021
MEDIUM	CEP 140012	CEP 140022
LARGE	CEP 140013	CEP 140023
X-LARGE	CEP 140014	CEP 140024
XX-LARGE	CEP 140015	CEP 140025
GIANT	N/A	CEP 140026

EMBALMING ACCESSORIES

TISSUE FILLER



Embalmers have injected many substances underneath the cadaver's skin for filling out emaciated tissues and wrinkles to recreate more youthful lifelike contours. Hizone's Tissue Filler has been the original product developed that forms a non-shrinking moldable gel after reacting with the water in the cadaver's tissues. This product allows you to shape the gel shortly after injection, and form a non-flowing solid that has similar texture and feel as embalmed tissues. It will not be absorbed by the tissues and disappear.

CD 21 TISSUE-PT Pint
CD 21 TISSUE-12 Box of 12 Pints

TISSUE FILLER SOLVENT



When you purchase Tissue Filler, check your inventory of the Tissue Filler Solvent. Your hypodermic syringe and needles should ALWAYS be cleaned using Tissue Filler Solvent both before and after injecting Tissue Filler. The Tissue Filler Solvent will absorb any trace water droplets present in your hypodermic arrangement before filling with the Tissue Filler for injection. Use the Solvent to flush partially gelled Tissue Filler from this equipment afterwards. Use just a very small quantity of Tissue Filler Solvent if you decide you want to thin Tissue Filler into a slightly more easily flowing injection liquid.

CD 21 TISSOL-PT Pint
CD 21 TISSOL-GL Gallon

LEAK-KNOT INCISION SEALANT POWDER



Super-absorbent polymer mixture that reacts in seconds on contact with liquid, eliminating leakage hazards in embalming. Use within cavities, cranial posts, posted cases, beneath suture seams, within the orifices or inside plastic undergarments, and other situations where moisture is a problem. Absorbed liquid can not be squeezed out by pressure. Contains no hazardous or regulated chemicals.

CD 21 LEAK-PT Pint
CD 21 LEAK-12 Box of 12 Pints
CD 21 LEAK-5184 Half-Gallon
CD 21 LEAK-5184-6 Case of 6-1/2 Gallon

SEAL-O-TITE



Seal-O-Tite is a highly flexible, transparent lacquer for permanently sealing incisions against leakage. It is waterproof. It is recommended for post-mortem seams, surgical incisions and as an adhesive for restorative art work. Large wounds may be filled by coating with Seal-O-Tite and cotton or gauze in alternate layers. If diluted, Seal-O-Tite may be used for the production of artificial skin on mutilated or burned bodies. Most embalmers find the MEDIUM consistency about right.

CD 21 5125-PT Pint
CD 21 5125-4 Package of 4 Pints

PAULEX POWDER



The uses for your can of Paulex Powder are countless. Use it to pack orifices, eliminate odors, or as a hardening compound. Use it for cancer cases, edema, gangrene, infection, burning, drowning, & stillbirth. It's also great for cremation, disinterments, autopsies and shipping.

CD 21 5098-1 1 Lb. Jar
CD 21 5098-12 Case/12 Jars
CD 21 5098-25LB Pail 25 Lb. net wtg.

HARDENING COMPOUND



Three properties in one preparation. Hardening Compound absorbs, hardens AND disinfects. Our Hardening Compound is indispensable in cases where circulation has been totally destroyed. Apply directly to affected parts to remove odors caused by sores, cancer, gangrene, or abscesses. Add cold water and use Hardening Compound as a bleaching paste to eliminate surface discoloration.

CD 20 HARD-25 25 Lb. Box
CD 20 HARD-50 50 Lb. Box

AUTOPSY COMPOUND



Autopsy Compound absorbs excess water & firms tissue in moments. Be-cause of its preserving agents, it is extremely effective in destroying pathogenic germs. Plus it is pleasant smelling, dustless, & contains no wood products.

CD 20 AUTO-25 25 Lb. Box
CD 20 AUTO-50 50 Lb. Box

SOLVENE



Solvене should be in every Prep Room. It is a very powerful organic solvent blend that will dissolve and remove most organic or oily spills and stains, including paint and lacquer. It will remove cosmetics, fingernail polish, printer's ink, road tar and grease from the cadaver's arms, hands, face and neck. Use a little Solvене for diluting Seal-O-Tite to a thinner consistency if desired. Do not use Solvене on synthetic fabrics or blends, as it will damage or dissolve them. Do not use on painted or waxed surfaces.

CD 21 SOLVENE-PT Pint
CD 21 SOLVENE-12 Box of 12 Pints

LAWDEAN HAIR WASH



Lawdean Hair Wash with lanolin is a fast-drying, highly effective, liquid dirt remover that is applied to the hair and scalp of the dead and then wiped vigorously AT ONCE with a soft dry cloth. All soil will adhere to the towel and the Lawdean will evaporate leaving the hair soft and fluffy in a few minutes.

CD 21 LAWDEAN-PT Pint
CD 21 LAWDEAN-12 Box of 12 Pints

GERMICIDAL SOAP



Concentrated liquid soap manufactured from a saponified high purity coconut oil base with a rich cleansing lather. Cleaning effectiveness is increased by synthetic wetting agents. This soap contains a mineral chelating ingredient that interacts with the hardest minerals dissolved in the water & greatly reduces soap scum formation. A powerful germicidal agent (a chlorinated phenol compound) & a low alcohol content combine to clean the body.

CD 21 5030-GL Gallon
CD 21 5030-4 Case of 4 Gallons

EMBALMING ACCESSORIES

COSMETICS & CREAMS



COSMETICS

Cosmetics are permanent so they never need touching-up. Apply lightly to face and hands for incredible appearance. Cosmetics are available in both 2 oz. and 4 oz. jars in the colors listed below:

2 oz. SIZE		4 oz. SIZE	
CD 21 2 OZ-1	Blush	CD 21 4 OZ-1	Blush
CD 21 2 OZ-2	Peach	CD 21 4 OZ-2	Peach
CD 21 2 OZ-3	Olive	CD 21 4 OZ-3	Olive
CD 21 2 OZ-4	Suntan	CD 21 4 OZ-4	Suntan
CD 21 2 OZ-5	Hi-Lite	CD 21 4 OZ-5	Hi-Lite
CD 21 2 OZ-6	Brn/Tan	CD 21 4 OZ-6	Brn/Tan
CD 21 2 OZ-7	Ochre		
CD 21 2 OZ-8	Red		
CD 21 2 OZ-9	White		
CD 21 2 OZ-10	Black		



FORMALIN CREAM

Essentially a pink, very thick emulsion of pure formaldehyde U.S.P. Solution in a cosmetic cream base. It replaces the old formaldehyde pack and is less severe. Be sure to wear rubber gloves whenever working with Formalin Cream. It is applied to regions which require additional formaldehyde fixation, by means of a spatula, brush, cream gun, or the fingers of the embalmer's rubber-gloved hands. The degree of hardness can be regulated by the thickness of the layer of cream. This cream is frequently applied behind the lips, in the nasal passages, under the eye lids, within the eye balls, on the ears, etc., depending on the conditions which the skilled embalmer recognizes. Formalin Cream may be readily washed off with soap and warm water.

CD 21 FORMALIN Pint Jar



LEEMO CREAM

Leemo Cream is formulated for the mortician, to be applied for the prevention of desiccation. The heavier the layer, the more effective it is. Leemo Cream is an excellent cleansing cream. It may be mixed with cosmetics to soften them. Embalmers often apply Leemo Cream to the face, neck, hands and arms before they inject their embalming chemicals. It will prevent possible accidental external staining from the embalming chemicals during the embalming procedures as well as help control dehydration during this critical preparation period.

CD 21 LEE 7122 Pint Jar



SEALER & MASSAGE CREAM

Sealer Cream derives its name from the fact that if it is applied to the skin before the embalming begins, then during the embalming operation as the formaldehyde slowly diffuses through to the skin, it combines with the formaldehyde to form a seal which prevents dehydration. The skin remains soft to the touch and lifelike even though the tissues beneath are embalmed hard. If Sealer Cream is used before and after shaving, it prevents so-called "razor burn". Sealer Cream is a superior massage cream of many uses.

CD 21 SEA 7172 Pint Jar



RESTORATIVE WAX & WOUND FILLER

Restorative Wax and Wound Filler, as the very name designates, is used in doing restorative art work to bring back natural life-like contours. It is soft and flexible for modeling work & capable of being drawn to a feather edge. It never dries out or draws back. For accident cases such a product is a must, to fill wounds and rebuild features. It is very similar to theatrical make-up.

CD 21 RESTOR Pint Jar



PINK SEALER CREAM

Pink Sealer Cream functions as a cosmetics base. Rub a thin coat of the lightly tinted Pink Sealer Cream as an undercoat base to coat the skin and seal the skin pores before applying the cosmetics.

CD 21 PINK SEAL Pint Jar



GLYDE SHAVE CREAM

Glyde Shave Cream is a very effective lubricating cream for blade shaving straight from the jar, eliminating any need to lather up or create a foam. This cream contains baby oil emulsified in water with micro-crystals of paraffin. Glyde was developed simultaneously along with the Mortuary Cosmetics colors and the Pink Sealer.

CD 21 GLYDE Pint Jar

PREP ROOM AIDS



NATURAL EXPRESSION MOUTH FORMERS

Made of clear vinyl, Natural Expression Mouth Formers are ready for fast, easy installation. No pre-shaping or pre-forming is necessary because their contoured design conforms closely to both natural and artificial outlines. The closer fit provided by the bite-indentation guide assures closing of the lips and reduction of moisture loss. Instructions for use included.

CD 22 687

Dozen per Box



EYE CAPS

Eye caps are oval with needle pointed perforations to hold the eye lids in place.

SIZE
Small
Large

CLEAR
CE MCL EYECAP-S
CE MCL EYECAP-L

FLESH
CE MFL EYECAP-S
CE MFL EYECAP-L



TROCAR BUTTONS

Snip-Tip Trocar Buttons, flesh-colored.

CD 22 TROCAR

1 Gross of Buttons



WAXED LINEN SUTURE THREAD

Thread is packaged in 1 pound rolls
CD 20 THREAD-WL 1 LB/6 Cord



LINEN SUTURE THREAD

Thread is packaged in 1 pound rolls
CD 20 THREAD-L7 1 LB/7 Cord



COTTON SUTURE THREAD

Thread is packaged in 1 pound rolls
CD 20 THREAD-C7 1 LB/7 Cord



NEEDLE INJECTOR & NEEDLES

Manual needle injector and needles for the injector

CESI MNI
CD 20 NEED-B
CD 20 NEED-S

Needle Injector
Gross of Brass Needles
Gross of Steel Needles

PREP ROOM AIDS



ARON ALPHA & LIP TITE

Aron Alpha is the fastest and most effective way to seal lips, eyelids, and incisions. Aron Alpha is a high-strength, instant adhesive that dries clear and colorless in less than 45 seconds.

CE 2ARON Pack of 5 Tubes

Lip Tite, a contact adhesive, as its name implies, was originally formulated to hold together lips of the deceased which have a tendency to separate. A very thin layer is

applied to both lips with the brush applicator fastened to the bottle cap; allowed to dry; and then the lips are pressed firmly together. It has been used by embalmers as a Spirit Gum, and as an adhesive for applying eyelashes, eyebrows, hair and for holding the eyes securely closed.

CD 21 LIPTITE

Package of 6, 1/2 oz. Bottles



ROLL COTTON

One pound rolls of 100% absorbent cotton.

CE 1710-1
CE 1710-5
CE 1710-25

1-4 Rolls
5-24 Rolls
Case of 25 Rolls

PREP ROOM AIDS



POLY ETHYLENE HEAD BLOCKS

Blue, Economy
CE 10121-BLK

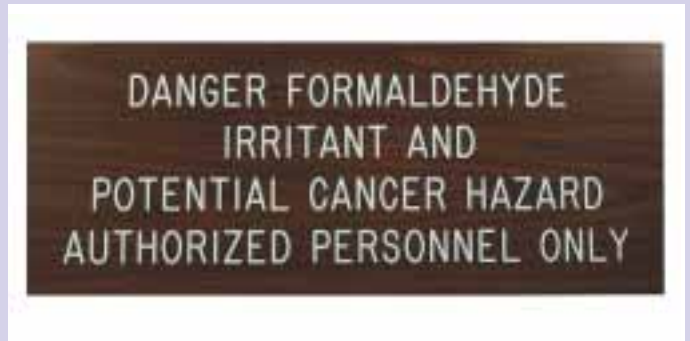
POLY-VINYL CHLORIDE HEAD BLOCKS

Black
CE 10126



STYROFOAM HEAD BLOCKS

Styrofoam
CE 10127



OSHA SIGN

Faux woodgrain "OSHA" sign engraved with white letters. Meets most OSHA requirements. Other signs available.

CB 9950

19" x 7.5" OSHA Sign

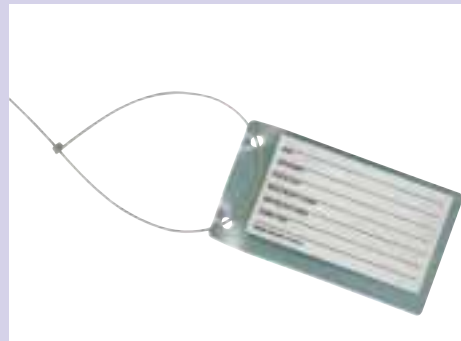


I.D. WRIST BANDS

Write-on I.D. wrist bands available in two colors: Red or White. Packaged 250 per box.

CE PDC 140-11-PDJ
CE PDC 140-16-PDJ

White ID Band
Red ID Band



BODY IDENTIFICATION TAGS

Finished tags are totally waterproof and smudgeproof. Kit consists of 100 laminating pouches, 100 write-on or type-on tags, and 100 one-way nylon ties.

CB 25

Body ID Tags Kit



WEBRIL® PREP TOWELS

WebriL® Prep Towels are 100% non-woven cotton fabric. One towel can absorb up to 10 times its own weight in liquid, & adheres to itself when folded, making an excellent "instant bandage". Towels are a convenient 8" x 15" size, but can be torn lengthwise into even strips or cut with scissors to meet exact specifications. Best of all, they're economical: 10 towels = 1 pound or more of roll cotton.

CE 2PREP-1
CE 2PREP-8

1 Roll
Case of 8 Rolls



DISPOSABLE PAPER/ PLASTIC PILLOW CASES

2 ply Tissue with Polypropylene Backing
CE 306-1C Case of 100 Pillow Cases

DISPOSABLE PAPER/ PLASTIC SHEETS

3 ply Tissue with Polypropylene Backing
CE 305-50 Case of 50 Sheets



DISPOSABLE PLASTIC APRON

Plastic apron measuring 28" x 45" and 1.75 mil thick. Made of embossed white opaque polyethylene. Packaged 100 per box.

CEP 451020 100 Disposable Aprons



SHARPS CONTAINER

Safely dispose of all your hazardous materials in our Sharps Container.

CE AO-1802

1 quart Container



BIOHAZARD BAGS

Red hazardous waste bags measuring 30.5" x 41". Will hold up to 33 gallons of disposable materials.

CE 117-RD BIO

Biohazard Bags

PROTECTION & SAFETY



ULTRA CARE GLOVES

Latex disposable gloves with 6.5mil thickness. Packaged 100 per box.

CE 9402
CE 9401
CE 9400

Small
Unisize
Large



P2 HI RISK GLOVES

Powder-free latex exam glove with 18 mil thickness. Packaged 50 pairs per box.

CE 23 751665
CE 23 751674
CE 23 751683
CE 23 751692

Small
Medium
Large
X-Large



SENSI-TOUCH SURGICAL GLOVES

Sensi-Touch glove is designed for fine surgical procedures when increased finger-tip sensitivity is an asset. The sizes range from 5 to 9 1/2. Please specify size. Packaged 50 pairs per box.

CE 7825

Specify size needed



NITRILE POWDER-FREE GLOVES

Disposable Nitrile gloves are powder-free and more puncture-resistant than Latex or Vinyl. Ambidextrous design. Packaged 100 per box.

CE 23 92-600-S
CE 23 92-600-M
CE 23 92-600-L
CE 23 92-600-XL

Small
Medium
Large
X-Large



NITRILE TEXTURED X-LONG CUFF

The Nitrile textured exam glove is 100% Latex-free. X-Long cuff has been added for extra protection. Non-sterile, Ambidextrous design. Packaged 50 per box.

CE 23 N891-S
CE 23 N892-M
CE 23 N893-L
CE 23 N894-XL

Small
Medium
Large
X-Large



NATURAL RUBBER LATEX EXAM GLOVE

Textured for Superior Grip. Beaded cuff Powder Free. Non-Sterile Ambidextrous design. Packaged 100 per box.

CE 23 69-318-S
CE 23 69-318-M
CE 23 69-318-L
CE 23 69-318-XL

Small
Medium
Large
X-Large

PURELL INSTANT HAND SANITIZER

The PURELL Program for Workplace Wellness helps stop the spread of germs with PURELL Instant Hand Sanitizer for each Desktop, Mortuary and Mortuary Cot Pouch. PURELL, America's #1 brand of instant hand sanitizer, kills 99.99% of most common germs that may cause illness.



SANITIZER FOR DESKTOPS

PURELL Instant Hand Sanitizer 8 fl. oz. pump bottle. 12 per case. Cases only.
CE GOJ 9652-12 Case



PURELL NXT SPACE SAVER

PURELL NXT Space Saver Dispenser. Ideal for limited wall space or where décor or usage levels demand smaller dispensers. Sold individually. Dispenser Hand Sanitizer Refill also available (33.8 fl. oz.). Sold 8 per case. Cases only.
CE GOJ 2120-06 Single NXT Space Saver Dispenser
CE GOJ 2156-08 NXT Sanitizer Refills (8) in Case



SANITIZING HAND WIPES

PURELL Instant Hand Sanitizing Hand Wipes. 1000 individually wrapped wipes in box. One box per case. Cases only.
CE GOJ 9021-1M Case of 1000 wipes



HAND SANITIZER

PURELL Instant Hand Sanitizer 4 fl. oz. squeeze bottle. Sold 24 per case. Full Case only.
CE GOJ 9651 Case of 24 bottles

BODY BAGS & SHEETS



STANDARD BODY BAG

White vinyl body bag. 8 mil thickness.
Curved zipper.

CEP 306020

Size: 54" x 90"



HEAVY DUTY 6 HANDLE BODY BAG

Black vinyl body bag. 20 mil thickness.
With six handles and curved zipper.

CEP 302040

Size: 36" x 90"



EXTENDED HEAVY DUTY BODY BAG

Green supported vinyl. 8 handles and
curved zipper.

CEP 303064

Size: 54" x 92"



CREMATION POUCH

White polyethylene vinyl acetate pouch. Curved zipper.
10 mil thickness. Safefor cremation. Contains no PVC.

CEP 04046

Size: 40" x 96"



BODY WRAP

Tan vinyl with 8 mil thickness.

CE 72120

Size: 72" x 120"

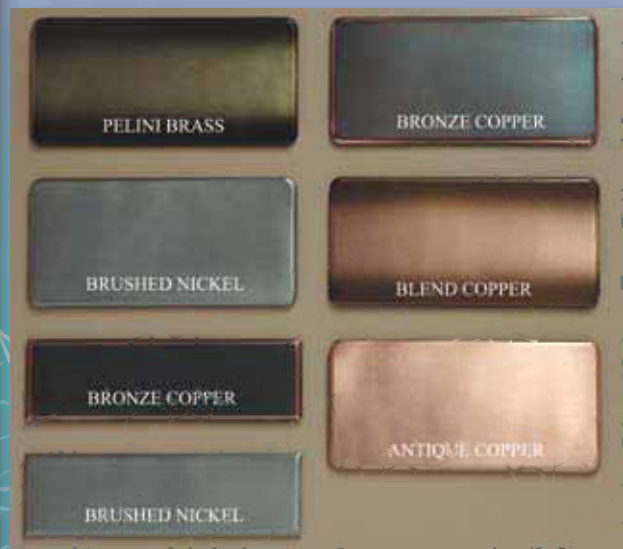
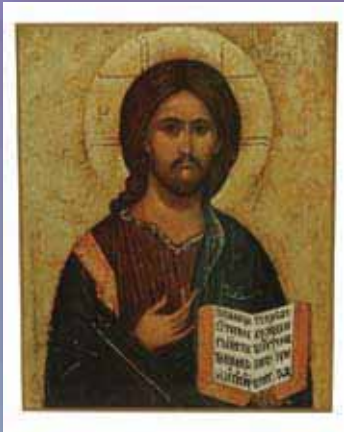


VINYL SHEET

Thick heavy duty vinyl sheet

CE MZ 60108

Size: 60" X 108"



Church & Chapel Metal Arts, Inc.



2616 W. Grand Avenue • Chicago, IL 60612-1117

773-489-3700

Check our website:

Fax: 773-489-3434

Toll Free: 1-800-992-1234

www.church-chapel.com

Toll Free Fax: 1-800-626-3299

Email: info@church-chapel.com